

fx:1 Group Holdings

168, Robinson Road, Capital Tower, #09-06/07, Singapore (068912)

Getting Started in Automated Trading System

MetaTrader 4 (MT4) is a highly regarded trading platform with its capability to automatically place trading orders based on different trading strategies. The tool that is used to conduct such automated trades is called Expert Advisor (EA).

An EA is a software program that trader can use within MT4 terminal. A trader may use an EA for different reasons, included but not limited to analyzing the market and creating trading signals, conducting fully automated trades, defining complex criteria for running a trade & etc.

In order to be able to use an EA you must attach it to a chart. If you attach an EA to a chart it uses the chart tic movements to analyze the market and do its job. For example if you attach an EA to USDJPY chart the EA will run every time the price of USDJPY moves. The following guideline shows you the steps to start using an EA.

Download & Setup of MT4

You may download the MT4 trading platform from any forex brokers who use it. In our example here, we will download MT4 from InterbankFX & save the setup file to the desktop. You may use this link <http://www.metaquotes.net/files/interbank/ibsetup4.exe>. Once the download completed, double click on the file, ibsetup4.exe and install MT4 into your computer. The default folder of the installation will be C:\Program Files\Interbank FX Trader 4\.

After the installation, MT4 will be launched. You could either apply a DEMO account by simply filling up the form or login your LIVE account by clicking the 'cancel' button. For our case, please select a "mini" DEMO account with an initial fund of U\$ 10,000.00.

Open an Account

Personal details
To open an account, please fill out all the following fields:

Name: Peter Petrelli

Country: United States State: NY

City: New York Zip code: 10005

Address: 88 Wall Street, 6th Floor

Phone: 1.908.731.0700 Email: Peter.Petrelli@heroes.com

Account Type: mini Currency: USD

Leverage: 1:200 Deposit: 10000

I agree to subscribe to your newsletters

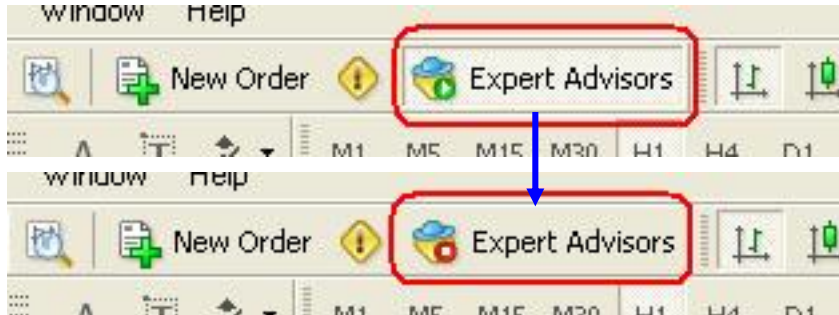
< Back Next > Cancel

Disclaimer: Forex is a risky market. There is no system or person who can guarantee your success. You implement the methods introduced in this FAQ and/or use this EA at your own risk. The author/owner of this FAQ and/or FX1 Group Holdings shall not be held liable for your losses of any kind including but not limited to the program failure.

fx:1 Group Holdings

168, Robinson Road, Capital Tower, #09-06/07, Singapore (068912)

Now, you are in front of your trading terminal with 4 chart windows. You do not need them now, so just click on “X” on the upper right of each chart windows to close them all. At the same time, you will see 2 rows of function buttons on the top. There is a button named “Expert Advisors” which has been turned on by default. It’s always advisable to have it turned off in all time unless you are running an EA. By simply click on it, you could turn it off.



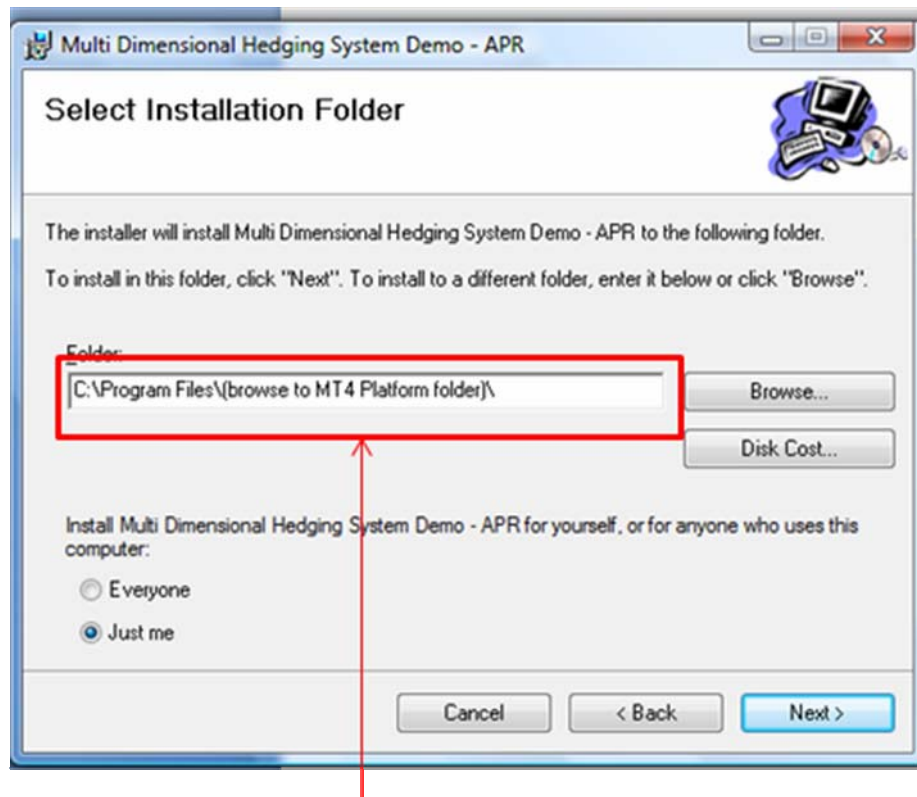
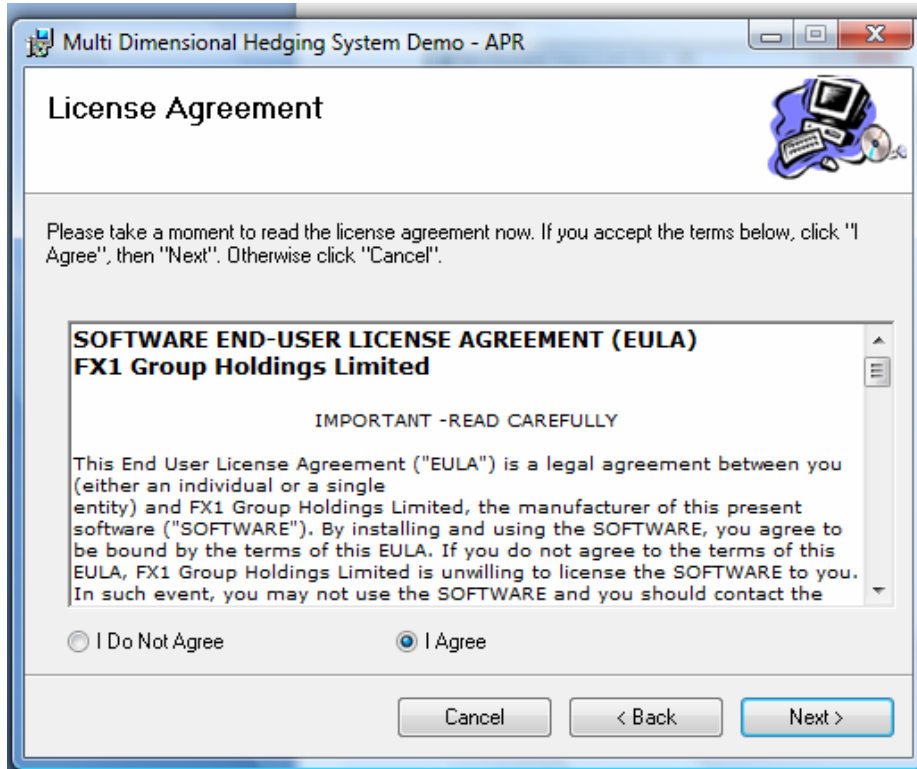
In order to load your EA into MT4, you are required to close the trading platform by clicking the “X” button on the upper right of the screen. Next is to install the EA into your MT4 Trading Platform directory. Run the installer zip file that is sent via email to you. Complete the installation.



Disclaimer: Forex is a risky market. There is no system or person who can guarantee your success. You implement the methods introduced in this FAQ and/or use this EA at your own risk. The author/owner of this FAQ and/or FX1 Group Holdings shall not be held liable for your losses of any kind including but not limited to the program failure.

fx:1 Group Holdings

168, Robinson Road, Capital Tower, #09-06/07, Singapore (068912)

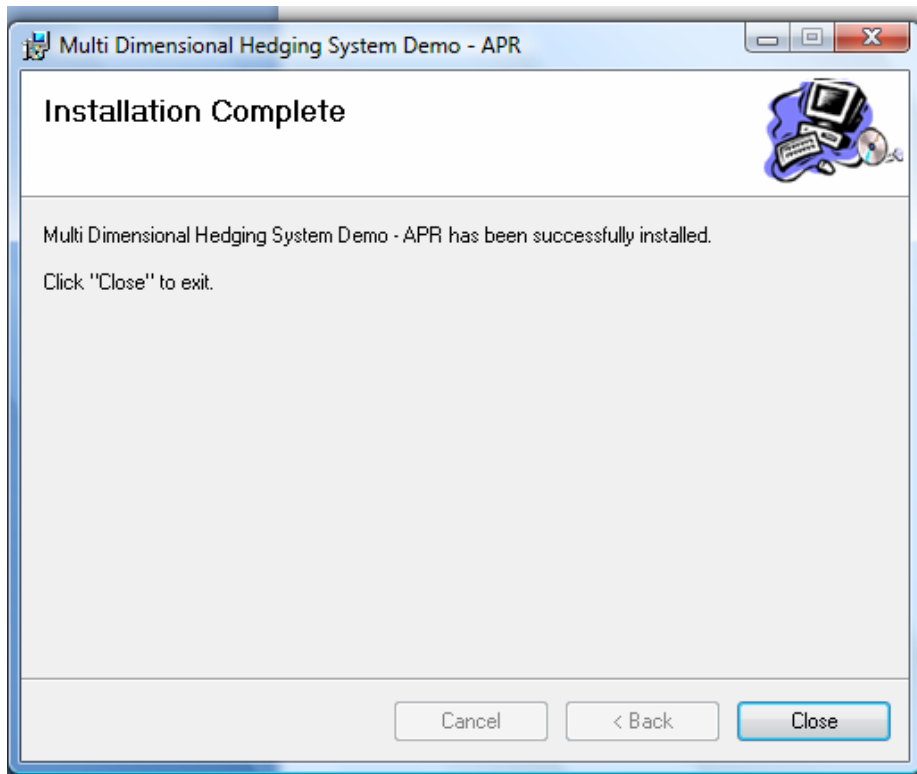
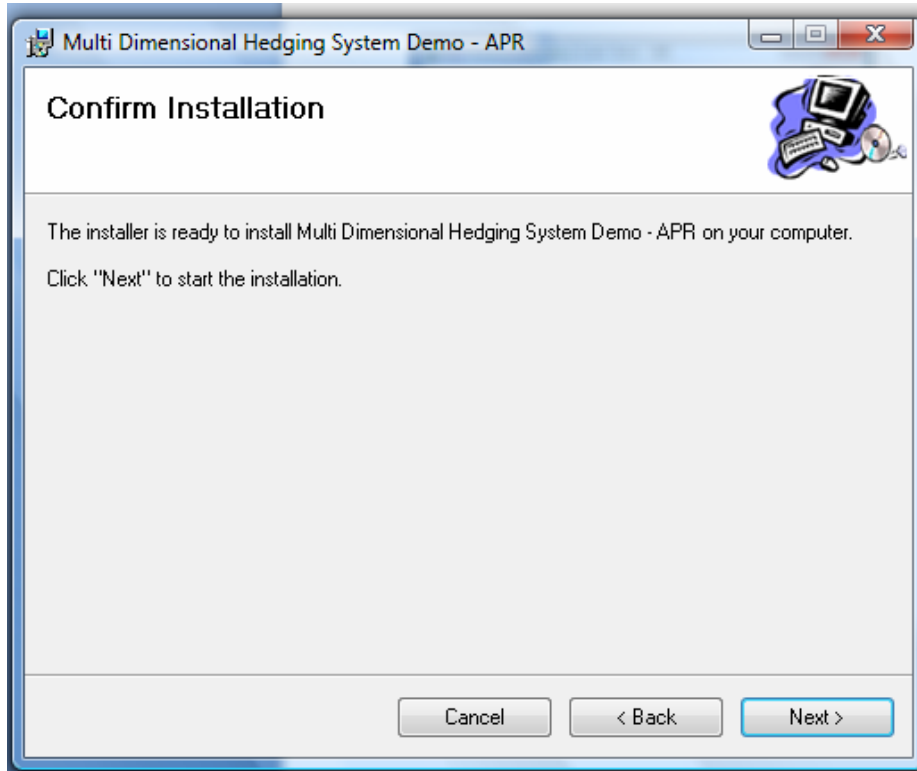


Ensure its pointing to the designated directory.

Disclaimer: Forex is a risky market. There is no system or person who can guarantee your success. You implement the methods introduced in this FAQ and/or use this EA at your own risk. The author/owner of this FAQ and/or FX1 Group Holdings shall not be held liable for your losses of any kind including but not limited to the program failure.

fx:1 Group Holdings

168, Robinson Road, Capital Tower, #09-06/07, Singapore (068912)



Installation completed. The EA is now installed into your MT4 Trading Platform.

Setup & Start of EA

Disclaimer: Forex is a risky market. There is no system or person who can guarantee your success. You implement the methods introduced in this FAQ and/or use this EA at your own risk. The author/owner of this FAQ and/or FX1 Group Holdings shall not be held liable for your losses of any kind including but not limited to the program failure.

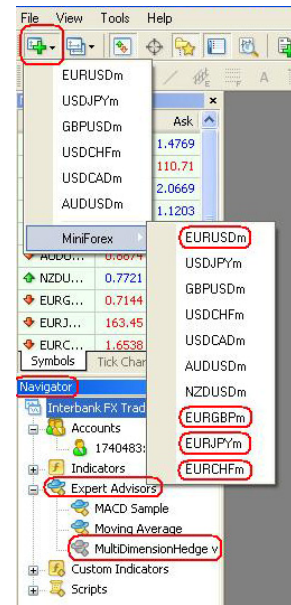
fx:1 Group Holdings

168, Robinson Road, Capital Tower, #09-06/07, Singapore (068912)

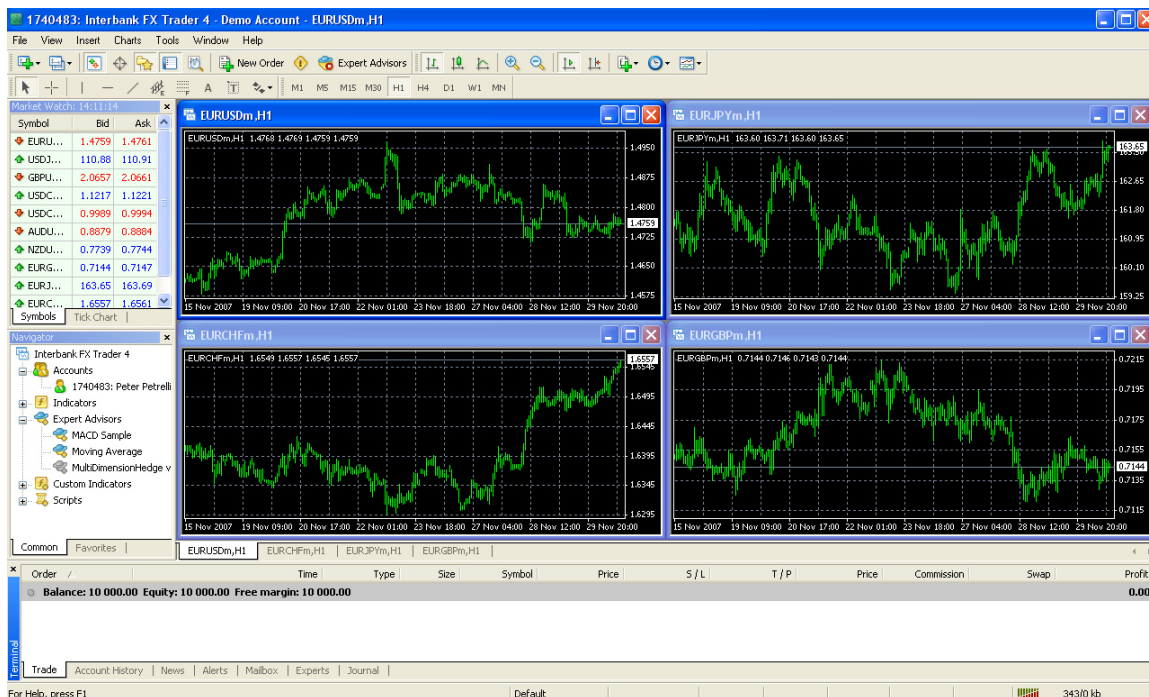
You are now ready to go through the real stuff. Let's re-start MT4.

Expand the "Expert Advisors" list under "Navigator" window and you should be able to find your EA in it.

Click on the "New Chart" button to open 4 chart windows, i.e. EURUSD, EURCHF, EURJPY & EURGBP. Open the "Window" drop-down menu and select "Tile Vertically".



Your MT4 trading platform should look something similar to the below.



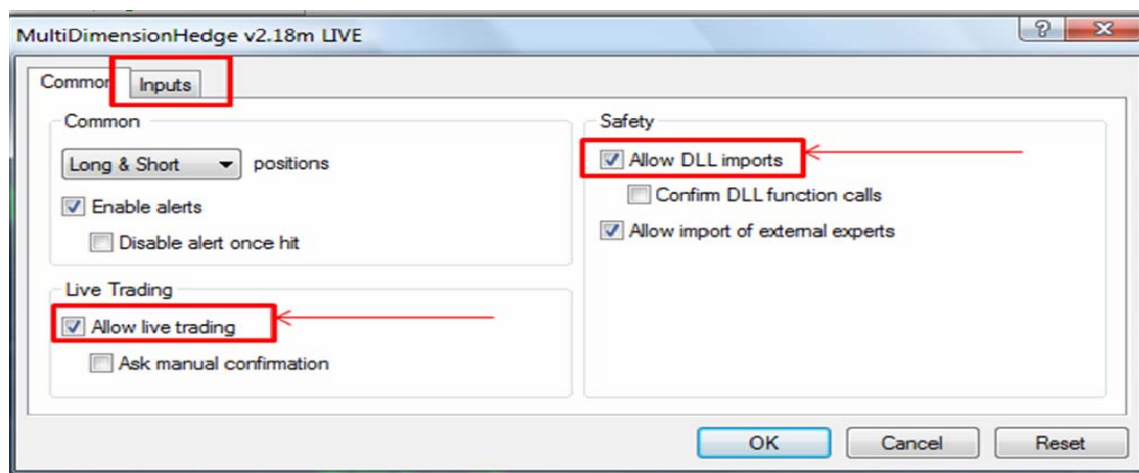
Select your EA from the "Expert Advisors" list and drag it to each of the chart windows. Check the box to allow live trading. (You are required to repeat this action on each of the EA dropped on the chart window).

Disclaimer: Forex is a risky market. There is no system or person who can guarantee your success. You implement the methods introduced in this FAQ and/or use this EA at your own risk. The author/owner of this FAQ and/or FX1 Group Holdings shall not be held liable for your losses of any kind including but not limited to the program failure.

fx:1 Group Holdings

168, Robinson Road, Capital Tower, #09-06/07, Singapore (068912)

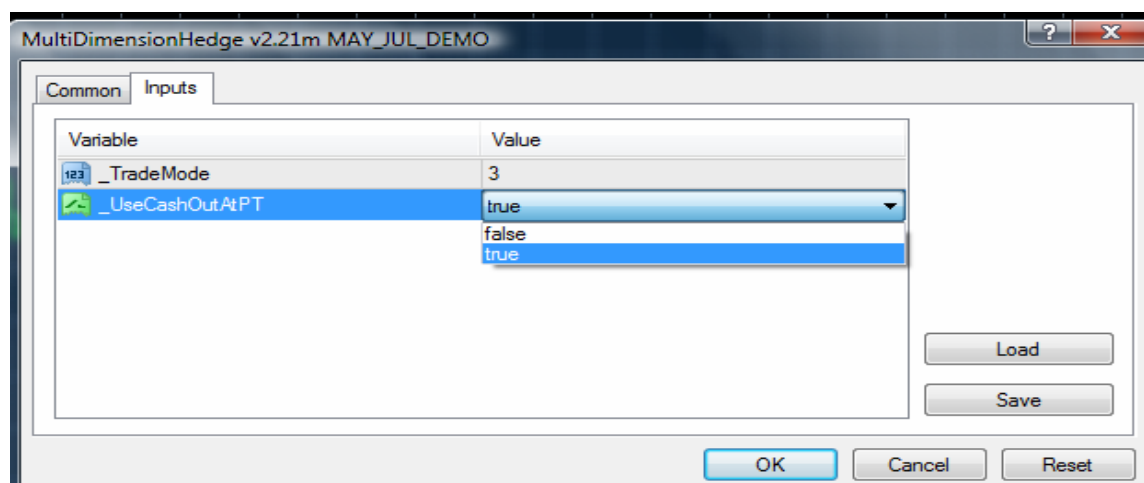
Ensure that the boxes to allow live trading and allow DLL imports are ticked as shown below. It is not necessary to click the box to confirm DLL function calls.



Click on the "Inputs" tab, there are 2 external parameters that you may change. "Trade Mode" allows you to control how your account is being traded. Adjust it to suit your risk profile, i.e. Mode 1 - Most Conservative, Mode 5 - Most Aggressive.

UseCashOutAtPT is a parameter to determine whether the EA should continue trading or not. By setting it to True, it instructs the EA to stop trading after it has hit its designated profit target. To re-initiate the EA, the user is required to remove all the EAs & re-attach the EAs back to the 4 charts. **(True = Semi-Automated)**

However, if it is set to False, the EA will automatically reset a new profit target and continue trading set by set. If the user would like the EA to stop trading, he/she can always turn _UseCashOutAtPT to True and the EA will then stop after the completion of current set of trades. **(False = Fully-Automated)**



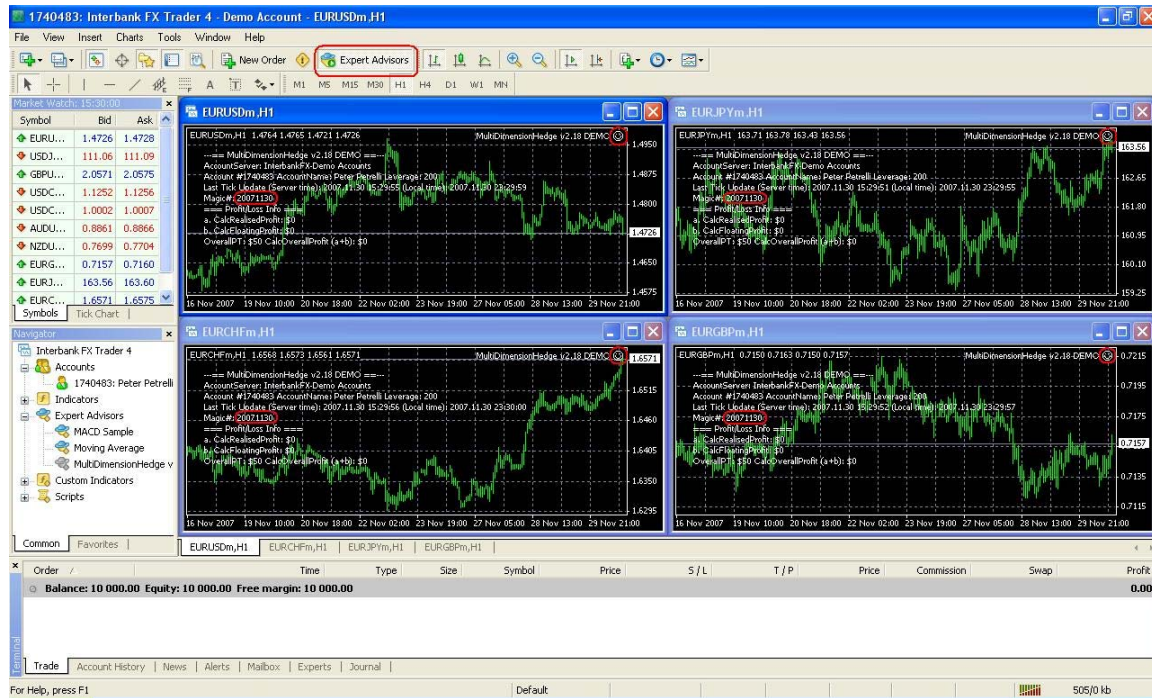
Once you have done with the 4 chart windows, you may then click on the "Expert Advisors" button on the top to start your EAs. You should notice a smiley face on the upper right of each

Disclaimer: Forex is a risky market. There is no system or person who can guarantee your success. You implement the methods introduced in this FAQ and/or use this EA at your own risk. The author/owner of this FAQ and/or FX1 Group Holdings shall not be held liable for your losses of any kind including but not limited to the program failure.

fx:1 Group Holdings

168, Robinson Road, Capital Tower, #09-06/07, Singapore (068912)

chart windows. If you don't, it mean that you may have forgotten to check on the box to allow live trading.



Disclaimer: Forex is a risky market. There is no system or person who can guarantee your success. You implement the methods introduced in this FAQ and/or use this EA at your own risk. The author/owner of this FAQ and/or FX1 Group Holdings shall not be held liable for your losses of any kind including but not limited to the program failure.